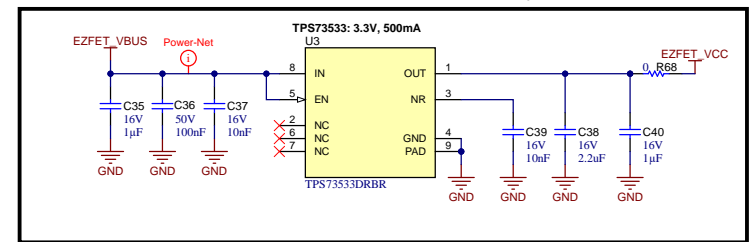
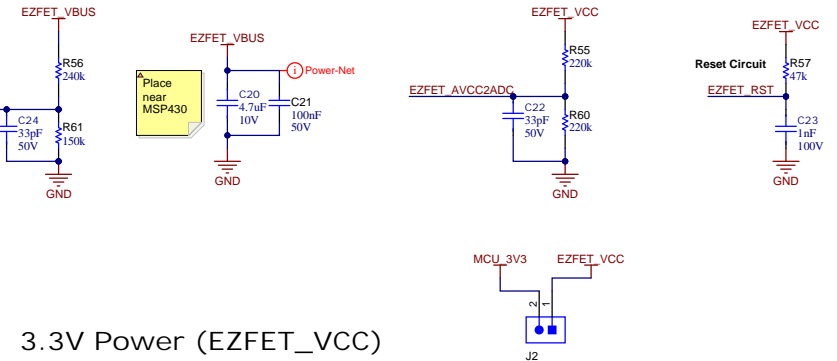
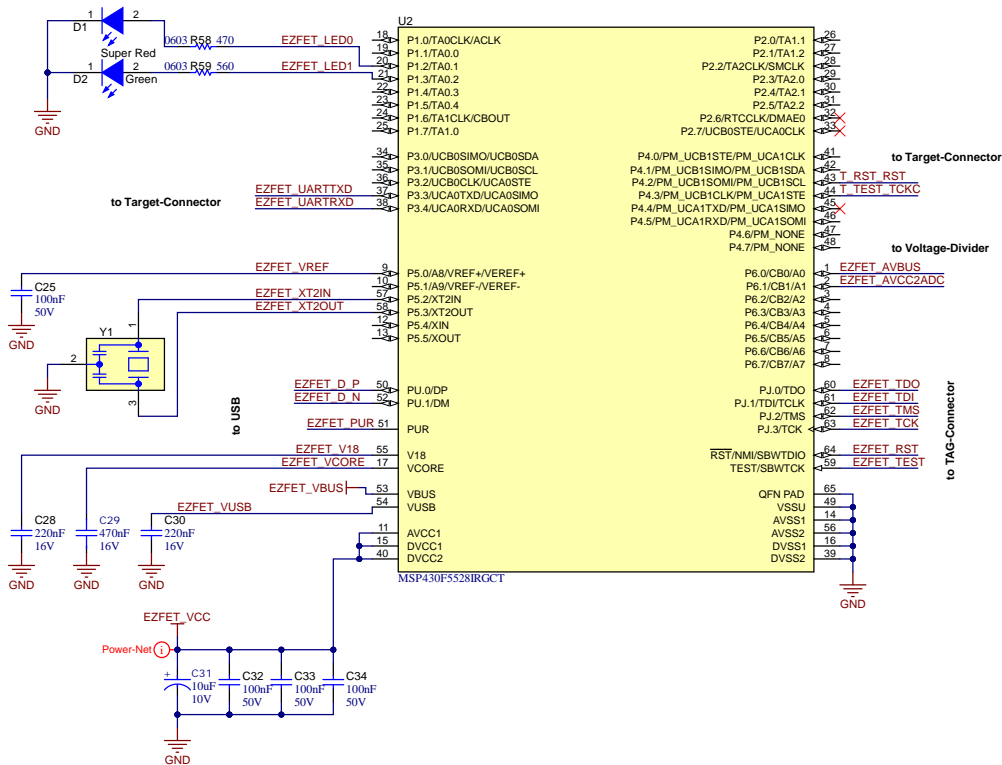
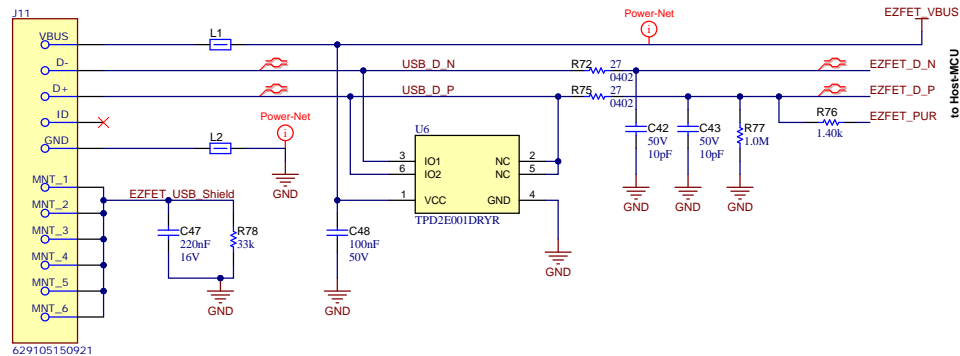


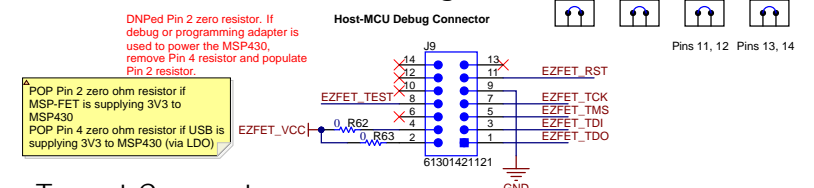
## Host MCU for Emulation



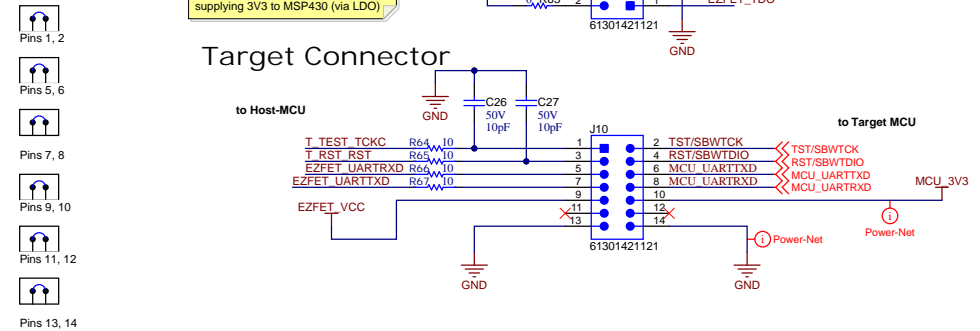
## USB-I-Interface



## JTAG-Connector (Host Debug)



## Target Connector



Texas Instruments and/or its licensors do not warrant the accuracy or completeness of this specification or any information contained therein. Texas Instruments and/or its licensors do not warrant that this design will meet the specifications, will be suitable for your application or fit for any implementation. Texas Instruments and/or its licensors do not warrant that the design is production worthy. You should completely validate and test your design implementation to confirm the system functionality for your application.

Orderable: DRV8100x-Q1EVM	Designed for: Public Release	Mod. Date: 02-04-2024
TID #: N/A	Project Title: MD075	Sheet Title:
Number: MD-075	Rev: E1	Assembly Variant: 001
SVN Rev: Not in version control	File: MD088E1_ezFET_SchDoc	Sheet: 1 of 3
Drawn By: Murugavel Raju	Engineer: Audrey Kushler	Contact: http://www.ti.com/support
		Size: B

Pin connection diagram for the PC10D04AAN component. The diagram shows a 20-pin connector (J7) on the left and a 20-pin connector (J8) on the right. The pins are numbered 1 to 20. The connections are as follows:

Pin	Signal	Value
TP20	GND	
TP21	MCU 3V3	
TP22	IN0	
TP23	IN1	
TP24	nSLEEP	
TP25	SDO	
TP26	SDI	
TP27	SCLK	
TP28	nSCS	
TP10	R94	100 nF
TP11	R95	100 nF
TP12	R96	100 nF
TP13	R97	100 nF
TP14	SDO	
TP15	SDI	
TP16	SCLK	
TP17	nSCS	
TP18	R98	100 nF
TP19	R99	100 nF

The component is labeled PC10D04AAN.

MCU 3V3

R19  
47k

RST/SBWTIDIO

C59  
1nF  
100V

GND

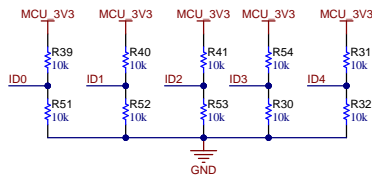
DEFAULT PINS 1-2

S1  
430481025816

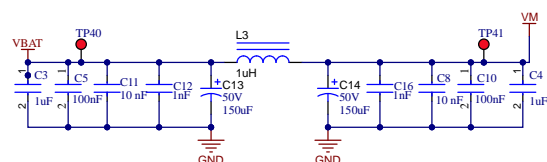
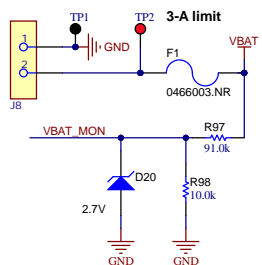
SELECT PUSH BUTTON FUNC

The resistors on the ID[2:0] nets inform the firmware which device ID variant is on this board

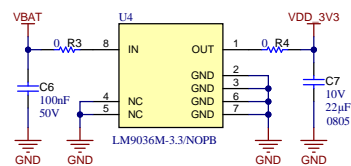
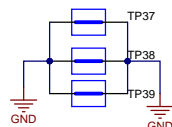
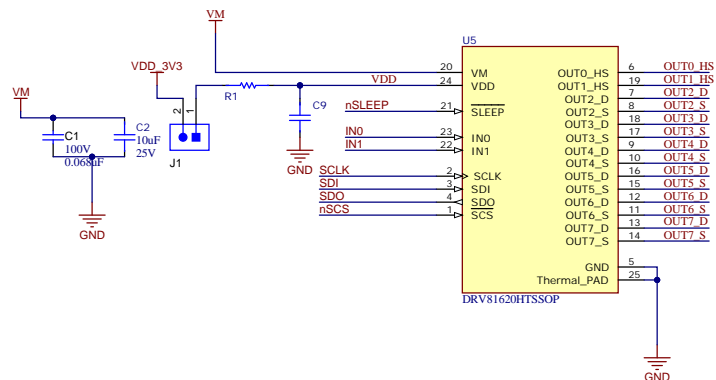
Device.	ID1
DRV81008-Q1	0
DRV81004-Q1	1
Just In Case	2
Revision 1	3
Revision 2	4



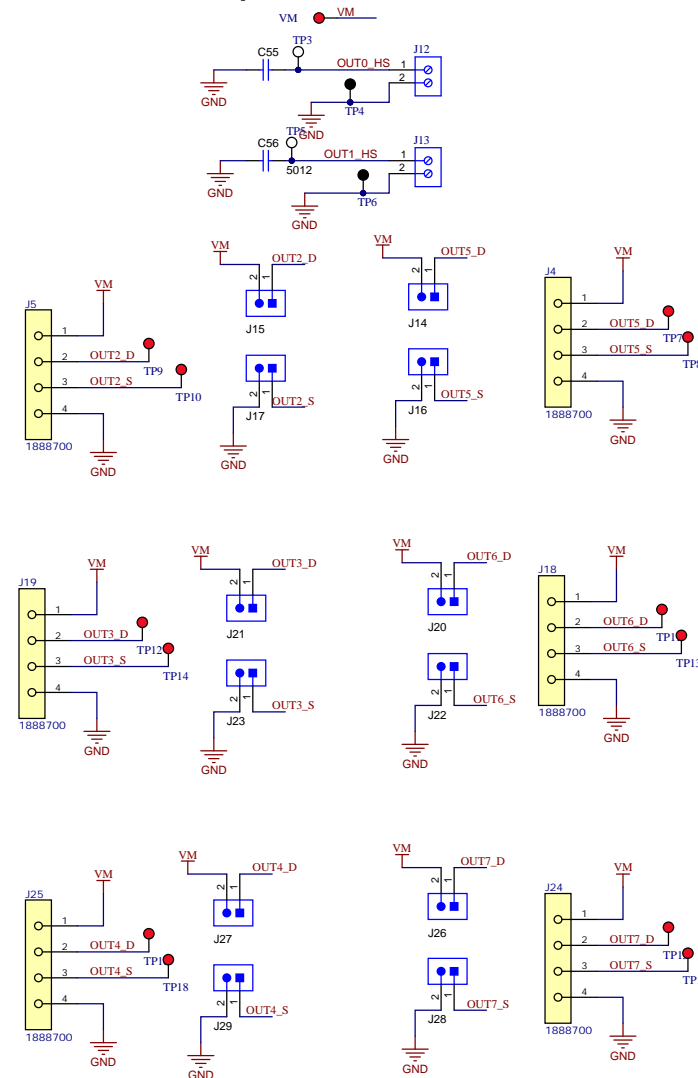
## Board power




### 3.3V LDO

**DRV81620-Q1**

## Output Connector



Orderable: <b>DRV8100x-Q1EVM</b>	Designed for: <b>Public Release</b>	Mod. Date: 17-06-2024	 <b>TEXAS INSTRUMENTS</b> <a href="http://www.ti.com">http://www.ti.com</a> © Texas Instruments 2023
TID #: <b>N/A</b>	Project Title: <b>MD075</b>		
Num. <b>MD-075</b>	[Rev: <b>E1</b>	Sheet Title:	
SVN Rev: <b>Not in version control</b>	Assembly Variant: <b>001</b>	Sheet <b>2</b> of <b>3</b>	
Drawn by: <b>Tilden Chen</b>	File: <b>MD088E1_DRV81xxx.SchDoc</b>	Size: <b>B</b>	
Engineer: <b>Audrey Kuehler</b>	Contact: <a href="http://www.ti.com/support">http://www.ti.com/support</a>		

Texas Instruments and/or its licensors do not warrant the accuracy or completeness of this specification or any information contained therein. Texas Instruments and/or its licensors do not warrant that this design will meet the specifications, will be suitable for your application or fit for any particular purpose, or will operate in an implementation. Texas Instruments and/or its licensors do not warrant that the design is production worthy. You should completely validate and test your design implementation to confirm the system functionality for your application.

4

 **TEXAS  
INSTRUMENTS**

<http://www.ti.com>

©Texas Instruments 2023

A

A

H1  
SJ-5303 (CLEAR)

H2  
SJ-5303 (CLEAR)

H3  
SJ-5303 (CLEAR)

H4  
SJ-5303 (CLEAR)



PCB  
LOGO  
Texas Instruments

CE Mark

PCB  
LOGO  
FCC disclaimer

PCB  
LOGO  
WEEE logo

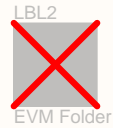
CAUTION HOT SURFACE

CAUTION HOT SURFACE

PCB  
LOGO  
CAUTION. READ USER GUIDE BEFORE USE

B

B



C

C

LBL1  
PCB Label  
THT-14-423-10  
Size: 0.65" x 0.20 "

ZZ1  
Label Assembly Note  
This Assembly Note is for PCB labels only

Variant/Label Table	
Variant	Label Text
001	DRV81008-Q1EVM

ZZ2  
Assembly Note  
These assemblies are ESD sensitive, ESD precautions shall be observed.

ZZ3  
Assembly Note  
These assemblies must be clean and free from flux and all contaminants. Use of no clean flux is not acceptable.

ZZ4  
Assembly Note  
These assemblies must comply with workmanship standards IPC-A-610 Class 2, unless otherwise specified.

D

D

Title		
Size	Number	Revision
A		
Date:	6-19-2024	Sheet of
File:	D:\prakash\..\MD088E1_Hardware.SchDocDrawn By:	

1

2

3

4